



# MONTHLY MEMBERSHIP PROGRESS REPORT

District 5M 9

Results as of: 6/30/2015

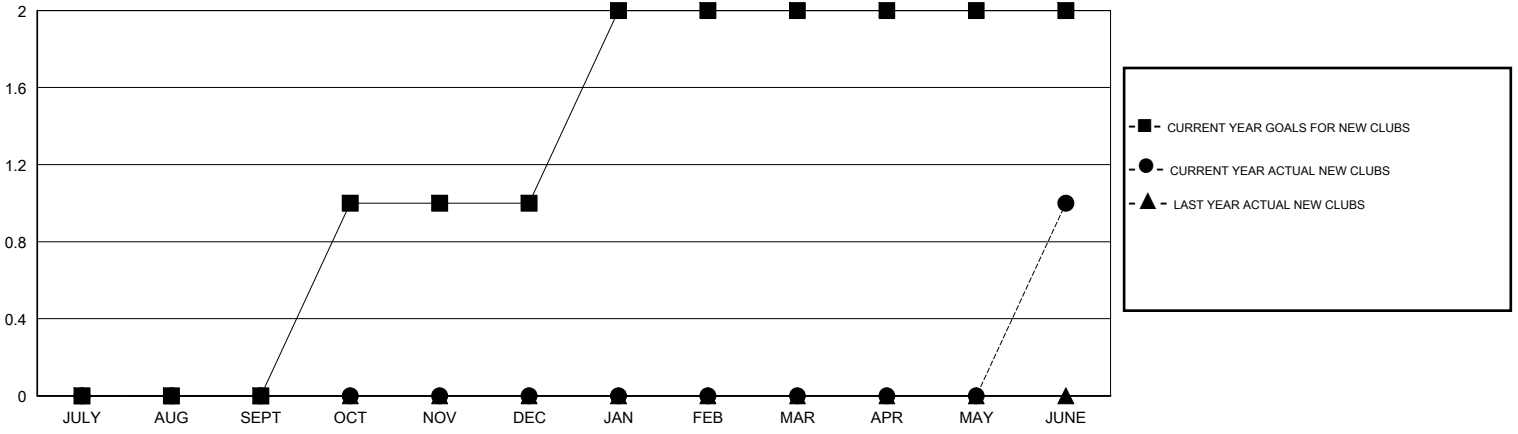
GMT: Judy Hankom

LOCATION MINNESOTA

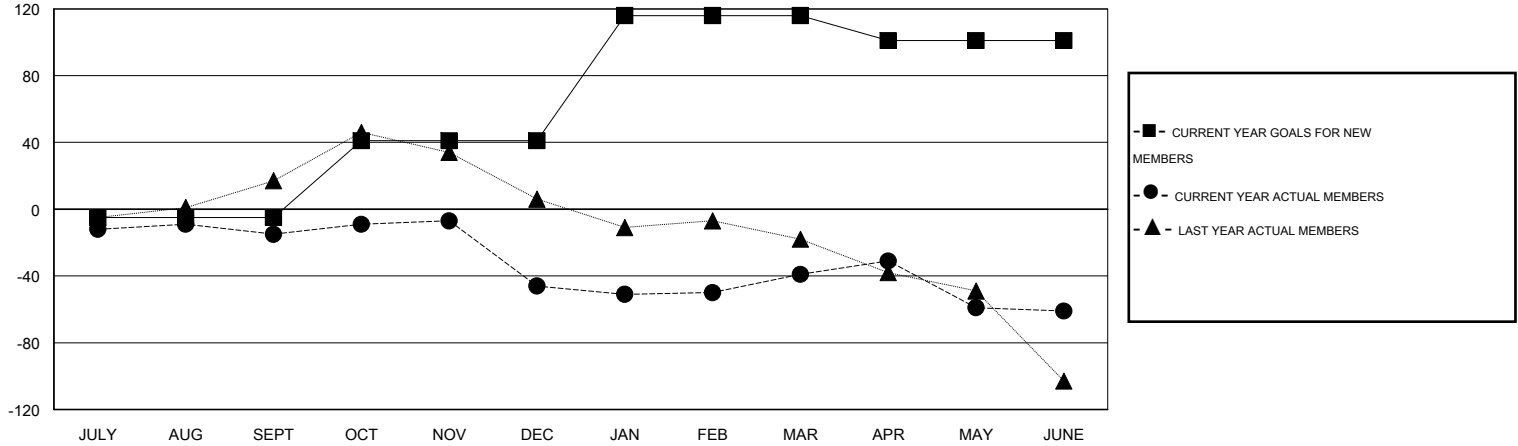
GMT CA 1

Clubs					Members				
RESULTS FOR 2014-2015					RESULTS FOR 2014-2015				
QUARTER	NEW CLUB GOAL	NEW CLUBS	DROPPED CLUBS	NET GAIN/LOSS	QUARTER	NEW MEMBER GOAL	CHARTER AND NEW MEMBERS ADDED	DROPPED MEMBERS	NET GAIN/LOSS
JULY/AUG/SEPT	0	0	1	-1	JULY/AUG/SEPT	-5	45	60	-15
OCT/NOV/DEC	1	0	0	0	OCT/NOV/DEC	46	41	72	-31
JAN/FEB/MAR	1	0	0	0	JAN/FEB/MAR	75	36	29	7
APR/MAY/JUNE	0	1	1	0	APR/MAY/JUNE	-15	81	103	-22

GOALS AND ACTUAL NEW CLUBS CUMULATIVE



GOALS AND ACTUAL MEMBERS CUMULATIVE



DROPPED CLUBS: 2	48 CLUBS OF 66 ADDED 1 OR MORE NEW MEMBERS	<b>GENDER DISTRIBUTION</b>
		MALE 1,502 (65.11%)
		FEMALE 805 (34.89%)
<b>DROPPED MEMBERS</b>	<a href="#">CLICK HERE FOR HEALTH ASSESSMENT DATA</a>	<b>FAMILY UNIT MEMBERS</b> 737
DECEASED 29		HEAD OF HOUSEHOLD 364
CLUB CANCELLED 18		NON-HEAD OF HOUSEHOLD 373
OTHER 217		
<b>TOTAL 264</b>		